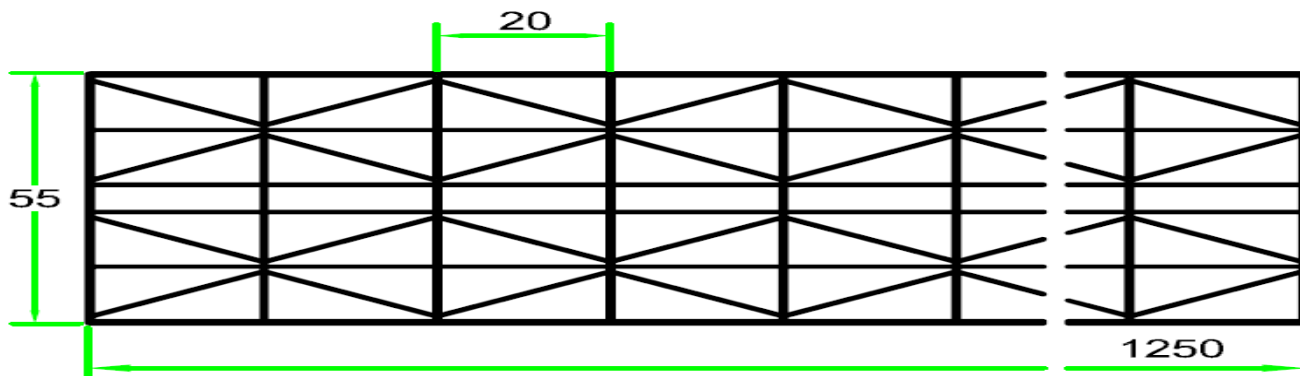
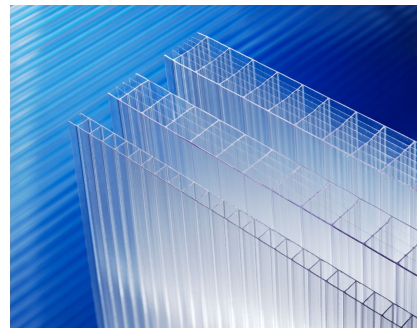


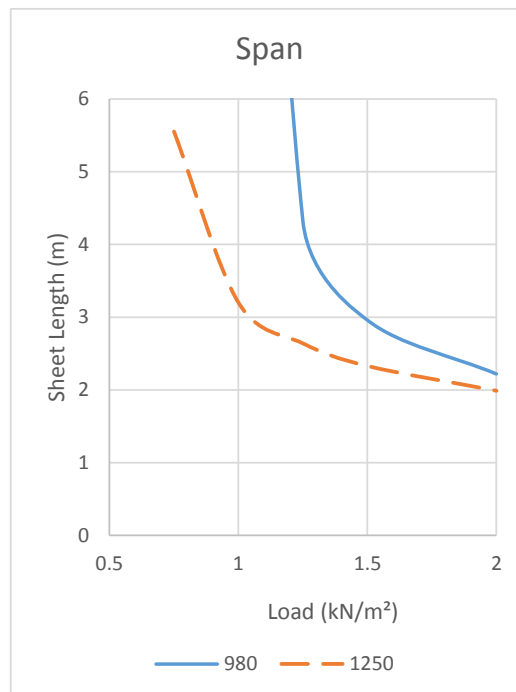
# marlon<sup>st</sup>

LOONGLIFE  
55mm Tenwall



Load (kN/m <sup>2</sup> )	Sheet Width	
	980mm	1250mm
0.75	-	5.5
1.00	-	3.2
1.25	4.32	2.64
1.50	2.96	2.33
2.00	2.22	1.99

Safe span figures are based on 20mm edge engagement plus a safety factor of 1.2



	Transmission	
Colour	Light	Solar
Clear	52%	51%
Opal	32%	46%

Product Characteristics	
	Tolerances
Width	≤1250 mm +/- 4 mm
Length	5 m -0, +10 mm Over 5 m -0, +25 mm
Thickness	55mm +/-0.5 mm
Sheet Weight	5.0Kg/m <sup>2</sup>
U Value	0.83W/m <sup>2</sup> K
Min Curve Radius	-



This information is given in good faith & is believed by Brett Martin Ltd to be accurate & reliable. Since the use of this information is not within Brett Martins control, no warranty, expressed or implied is given. It is the users' responsibility to determine whether the product is appropriate for their purpose.

Brett Martin Ltd. pursues a policy of continuous product development and reserves the right to amend specification without notice.

Brett Martin Ltd., 24 Roughfort Road, Mallusk, Co. Antrim, N.Ireland, BT36 4RB.

Tel: +44 (0)28 9084 9999 Fax: +44 (0)28 9083 6666 E-mail: technical@brettmartin.com



MARLON ST is the multiwall polycarbonate sheet manufactured by Brett Martin. The sheet is characterised by high optical clarity, light transmission, impact resistance and durability. It is available in a range of standard sizes, clear and tinted. MARLON ST Longlife has a coextruded UV protection layer on one side.

#### **Warranty**

There is 10 year limited warranty against loss of light transmission, yellowing and weather impact available for this product.

#### **Quality**

Manufactured under ISO 9001 to EN 16153

#### **Handling & Safety**

Do not step directly on the rooflight. Use stepping boards. Work according to local safety regulations

#### **Storage**

Store in a shaded place, protect from direct sunlight and rain prior to installation. Avoid covering the sheets with heat absorbing materials. Avoid contact with chemicals. Protect the sheets from physical damage.

#### **Installation**

Make adequate allowance for thermal movement, nominally 3.5mm per metre. Holes drilled for fixings must be oversized. Sheet lengths must be limited to ensure there is no excessive movement at the end laps.

#### **Service Temperature**

For stable prolonged service ranging from  $-20^{\circ}\text{C}$  to  $100^{\circ}\text{C}$ . (Short term unstressed  $-40^{\circ}\text{C}$  to  $130^{\circ}\text{C}$ )

#### **Maintenance**

In order to maintain this product in good condition it should be cleaned periodically using suitable detergent cleaning agents. Do not use solvent cleaners. Do not scrub with brushes or sharp implements. Avoid cleaning in hot sun or high temperatures.



This information is given in good faith & is believed by Brett Martin Ltd to be accurate & reliable. Since the use of this information is not within Brett Martins control, no warranty, expressed or implied is given. It is the users' responsibility to determine whether the product is appropriate for their purpose.

Brett Martin Ltd. pursues a policy of continuous product development and reserves the right to amend specification without notice.

Brett Martin Ltd., 24 Roughfort Road, Mallusk, Co. Antrim, N.Ireland, BT36 4RB.

Tel: +44 (0)28 9084 9999 Fax: +44 (0)28 9083 6666 E-mail: [technical@brettmartin.com](mailto:technical@brettmartin.com)